

2017-2018  
SEOUL NATIONAL UNIVERSITY  
COLLEGE OF NURSING





MESSAGE FROM THE DEAN	05
OVERVIEW OF COLLEGE OF NURSING	07
HISTORY	08
ORGANIZATION	11
ACADEMIC PROGRAMS	12
FACULTY	18
SCHOLARSHIP	24
CURRENT STATUS OF ALUMNI	25
EXTRA-CURRICULAR ACTIVITIES	26
GLOBALIZATION	27
FACILITIES	28
RESEARCH INSTITUTE OF NURSING SCIENCE	30
MUSEUM OF NURSING SCIENCE	31
ADMISSION GUIDE FOR INTERNATIONAL STUDENTS	32

## Standing up as the World Class Leading College in Nursing Education



Greetings.

Our college of nursing was established in 1907 and we are celebrating our 110th anniversary this year.

As a leading school in Korea and around the world, our faculty, students, and alumni are working together to bring science, technology, and caring together to improve the health of people by addressing various health issues in hospitals, communities, and local welfare centers.

Our college of nursing is consistently in the pursuit of excellence in nursing education and research within Korea and abroad by preparing for the next generation of healthcare leaders by accelerating innovation through collaboration with other disciplines.

Thank you for your support.

Dean, College of Nursing, Seoul National University

Smi Choi-Kwon, RN, PhD



## Leading the development of nursing study with the best educational environment

For the health and well-being of all Korean people, the Seoul National University College of Nursing stands at the forefront of the professionalization, internationalization, and information digitalization of the nursing discipline, devoting the utmost effort to the realization - on an internationally acceptable level - of education, research, and community service as collegiate functions. The College of Nursing not only oversees the education of undergraduate, Master's, and Ph.D. programs, which offer nursing as a major, but also plays a central role in the study of nursing within and outside of Korea. In addition, the College of Nursing is responsible for the education and training of nursing scholars and clinical nurses working in various domestic fields.

The undergraduate program spans 4 years with a total of 320 students currently enrolled with approximately 80 students per class year. In 2017, 68 students were studying on the Master's program, 66 students were on the M.S.N.-Ph.D. program, 62 students were studying on the Ph.D. program, bringing the total number of students enrolled in the graduate program to 196. As of 2017, the faculty and staff of the College of Nursing consisted of 23 full-time professors in charge of education and research, 56 part-time lecturers, 83 adjunct professors, 4 teaching assistants assisting the professors, and 6 administrative personnel in charge of general, academic, student, and residential affairs.

In the past decade, the SNU College of Nursing has been able to boast about such excellent graduates that include two members of the National Assembly, a Minister for Health, Welfare and Family Affairs, heads of numerous Korean hospitals, and professors at various nursing schools. In this optimal educational environment, the excellent faculty and superb students provide the driving force behind the nursing discipline.

| HISTORY |

## The last 110 years were priming water for 'Healthy Future with SNU Nursing'

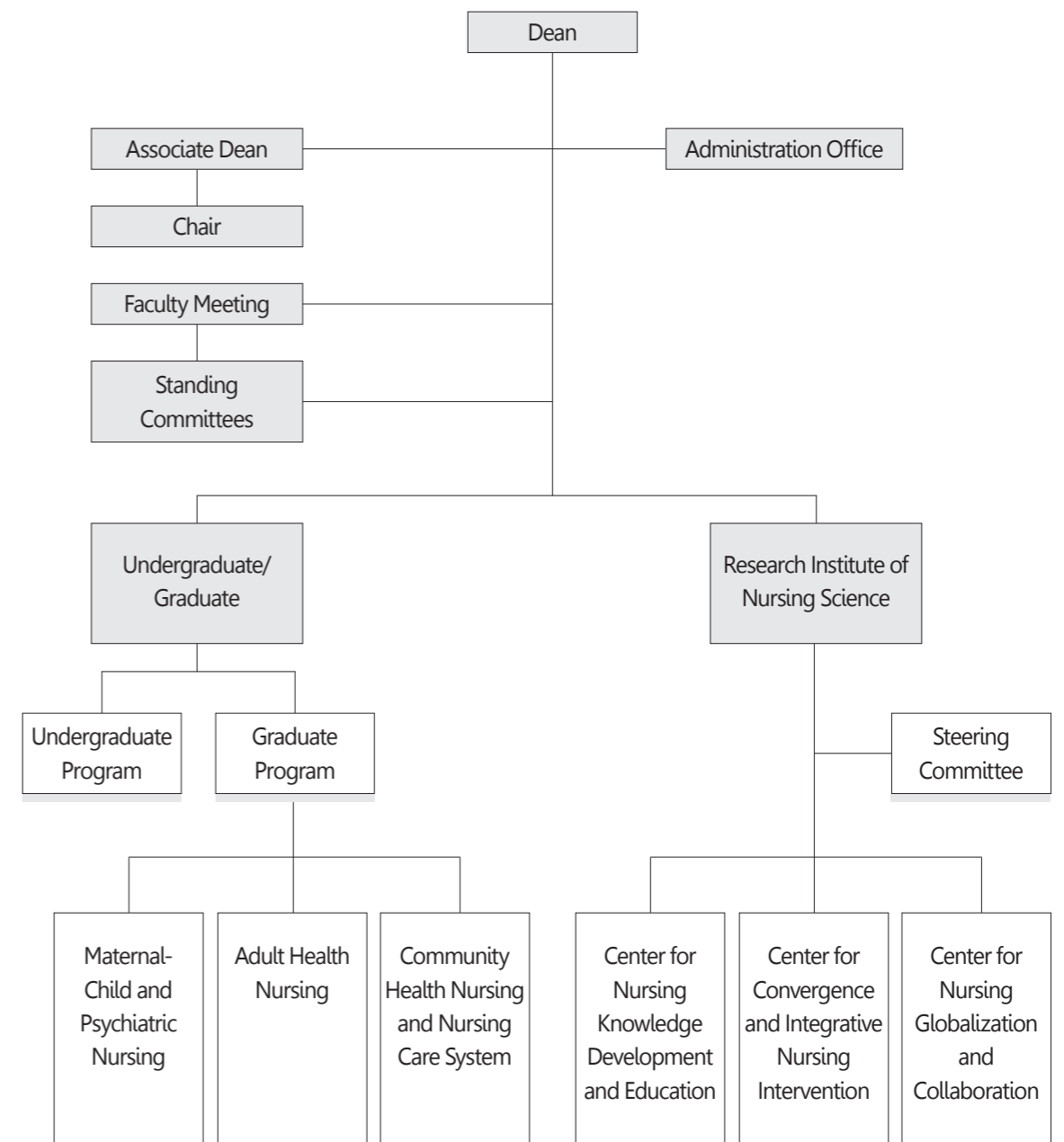
### 1907~1997

- 1907 Founded as a Two-Year Training Program for Midwives and Nurses, Daehan Hospital
- 1928 Two-year Program for Midwives and Nurses, Kyung Sung University
- 1946 Promoted to Three-Year Nursing Program within the College of Medicine, Seoul National University
- 1958 Construction of Nurse's Dormitory Building (Supported by China Medical Board)
- 1959 Promoted to Four-Year Bachelor's Program, Department of Nursing, College of Medicine, Seoul National University
- 1964 Established Master's Program
- 1984 Established Doctoral Program
- 1992 Promoted to the College of Nursing, Seoul National University
- 1995 Established the Research Institute of Nursing Science
- 1997 Construction of New College Building

### 2000~2017

- 2000 Moved into the New College Building
- 2004 Construction of New Student's Dormitory Building
- 2005 Moved into New Dormitory Building
- 2007 Celebration of 100th Anniversary/ Opened Museum of Nursing Science
- 2009 Established SNU-NURSING Mentoring Program(SNU-NMP)
- 2009 International External Evaluation of Nursing Education
- 2010 Renovation and Expansion of College of Nursing Research Building
- 2012 Established M.S.N-Ph.D. Program
- 2012 Opened SHINE (Simulation-based, Humanity-Integrated Nursing Education) Center
- 2013 Opened OSCE(Objective Structured Clinical Examination) Center
- 2014 Certificated by Korean Accreditation Board of Nursing Education





## Undergraduate (Bachelor's Degree)

### Educational Goals

The overriding educational goal of the SNU College of Nursing B.S.N. programs is to educate students to become professional health care leaders with creativity and critical thinking, who contribute to welfare of humankind based on the humanitarian ideal.

### Educational Programs

The total number of credits required for graduation from the College of Nursing is 140, of which 96 are in the student's major and 36 are in general courses. General courses are consisted of the Critical Thinking and Writing, Foreign Language, Mathematical Sciences, Natural Science, Computer and Information Science as Academic Foundations; Language and Literature, Culture and Art, History and Philosophy, Politics and Economy, Humans and Society, Nature and Technology, Life and Environment as World of Knowledge.



<b>Freshman Year</b>	Human and Health	Foreign Language
	Introduction to Professional Nursing	Language and Literature
	Chemistry	Culture and Art
	Chemistry Laboratory	History and Philosophy
	Biology	Politics and Economy
	Biology Laboratory	Humans and Society
Critical Thinking and Writing		
<b>Sophomore Year</b>	Fundamental Nursing and Practicum I	Statistics in Nursing
	Fundamental Nursing and Practicum II	Anatomy and Physiology in Nursing and Laboratory
	Introduction to Health Promotion Behavior	Communication/Interpersonal Relationship and Lab
	Nutrition and Diet	Community Health Nursing I
	Health Education and Counseling	Pathophysiology
	Microbiology in Nursing	Pharmacology in Nursing
<b>Junior Year</b>	Community Health Nursing II	Adult Health Nursing Practicum I
	Community Health Nursing Practicum	Pediatric Health Nursing
	Adult Health Nursing I	Pediatric Health Nursing Practicum
	Rehabilitation Nursing and Practicum	Nursing Informatics and Practicum
	Adult Health Nursing II	Adult Health Nursing Practicum II
	Psychiatric Mental Health Nursing I	Gerontological Nursing and Practicum
	Introduction to Nursing Research	
<b>Senior Year</b>	Nursing Management	Nursing Management Practicum
	Practice in Nursing Research	Psychiatric Mental Health Nursing Practicum
	Family Health Nursing and Practicum	Child Bearing Family Nursing
	Psychiatric Mental Health Nursing II	Child Bearing Family Nursing Practicum
	Seminar in Nursing Ethics	Advanced Nursing
	▶ School Health Nursing & Practice	▶ Women's Health Nursing and Practicum
	▶ Critical Care and Practicum	▶ Health Care System and Nursing Policy
	▶ Major Elective Course	

## Graduate (Master's and Doctoral Degree)

### Educational Goals

The educational goal of graduate program of SNU College of Nursing is to cultivate nursing scholars who are able to contribute to the progress of the nursing discipline through scientific inquiry, and nursing specialists who possess the professional knowledge and skill required to meet the changing demands of society.

### Educational Programs

The graduate program of the SNU College of Nursing is divided into 3 separate majors (Adult Health Nursing, Maternal-Child and Psychiatric Nursing, Community Health Nursing and Nursing Care System) in the master's, M.S.N.-Ph.D. and Ph.D. programs. The master's program has a required minimum of 30 credits for completion. The M.S.N.-Ph.D. program requires student to complete a total of 60 credits and Ph.D. program requires 60 to 66 credits combined with the master's program.

Apart from their curriculum, graduate students are allowed to participate in small research seminars conducted by other graduate students and professors with similar academic interest. The College also invites internationally renowned scholars as well as College professors to conferences it hosts, which serves to promote the development of the nursing science through encouraging the participation of nursing experts and educators both domestic and international.



### Core Courses

<b>Core Courses</b>	Theoretical Foundation of Nursing	Strategies for Theory Construction in Nursing
	Nursing Research Methodology	Qualitative Nursing Research Methodology
	Intermediate Statistics in Nursing	Advanced Statistics in Nursing
	Seminar in Stress Response Management	Advanced Design for Nursing Research
	Qualitative Data Analysis	Sociocultural Diversity and Health
	Advanced Therapeutic Communication and Practicum	Global Healthcare and Nursing Reading and Research
	Dissertation Seminar I	Research Ethics
	Dissertation Seminar II	Nursing Philosophy
	Analysis and Evaluation of Nursing Theories	Instructional Methodology in Nursing

### Adult Health Nursing Major

<b>Adult Health Nursing</b>	Seminar in Advanced Adult Nursing
	Advanced Physical Examination and Practice
	Clinical nursing physiology
	Advanced Nutrition in Nursing
	Advanced Pathophysiology
	Self-management of Clients with Chronic Illness
	Stress and Wellness
	Mind-body integrative healing science
	Symptom Management in Cancer
	Physiology of Human Behavior
	Advanced Pharmacology in Nursing
	Management of Elderly Health Problems
	Advanced Rehabilitation Nursing
	Introduction to Oncology
	Oncology Therapeutics and Nursing 1
	Oncology Therapeutics and Nursing 2
	Tailored Nursing Intervention Research
	Sleep disturbances and fatigue in patients with chronic disease
	Technologies in Aging Care
	Hospital Epidemiology and Infection Control Nursing



### Maternal-Child and Psychiatric Nursing Major

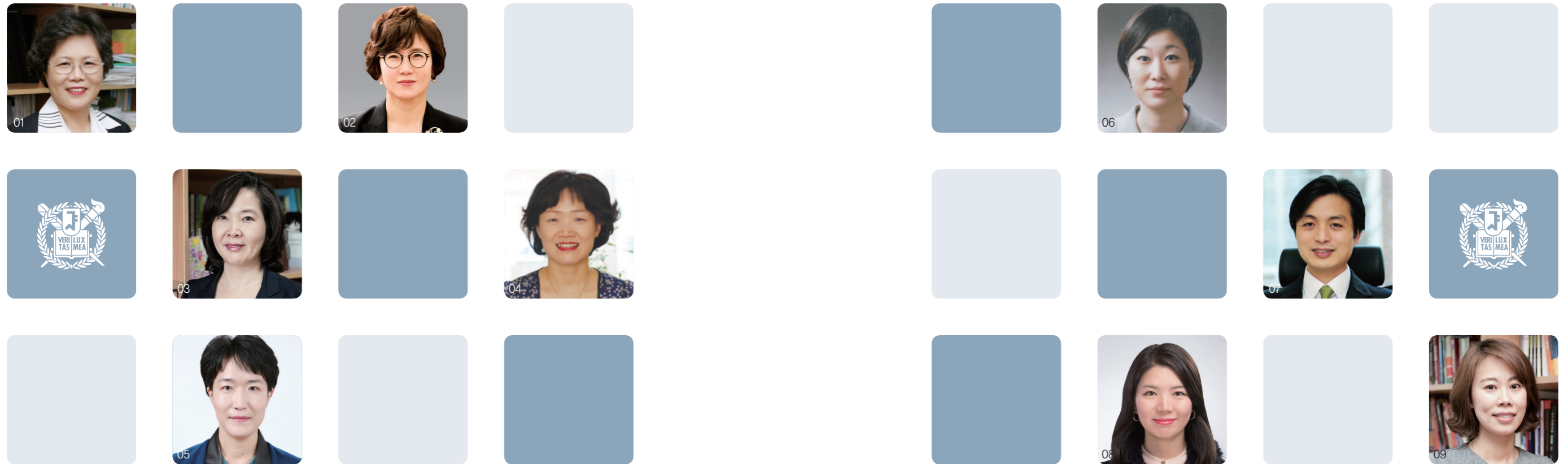
<b>Women's Health &amp; Maternity Nursing</b>	<p>Feminism and Women Health Nursing</p> <p>Young Adult Women's Primary Care and Practice</p> <p>Maternity Nursing Research</p> <p>Physiological Adaptation of Pregnant Women</p> <p>Seminar in Women's Sexual Health</p> <p>Theory in Maternity Nursing: Concepts, Theories, and Research</p> <p>Women Health Nursing Across the Lifespan</p>
<b>Child Health Nursing</b>	<p>Critical Infant Care</p> <p>Theories of Pediatric Nursing Intervention</p> <p>Seminar in Advanced Pediatric Nursing</p> <p>Child Development and Health Promotion Strategies</p> <p>Transcultural Approach to Child Rearing Practice</p> <p>Theory and Research in Child Health Nursing 1</p> <p>Topics in Parent-Child Health</p> <p>Nursing Care of Children with Chronic Illness</p>
<b>Psychiatric &amp; Mental Health Nursing</b>	<p>Seminar in Advanced Psychiatric Mental Health Nursing</p> <p>Seminar in Psychosocial Nursing Intervention</p> <p>Advanced Psychiatric-Mental Health Nursing Interventions</p> <p>Psychiatric-Mental Health Nursing based on the Developmental Stages</p> <p>Psychiatric-Mental Health Nursing for Families</p> <p>Community-based Psychiatric-Mental Health Nursing service</p> <p>Psychiatric Nursing for Addicted Clients</p>

### Community Health Nursing and Nursing Care System Major

<b>Nursing Management</b>	<p>Management Theory in Nursing</p> <p>Organizational Behavior in Nursing</p> <p>Research Seminar in Nursing Management</p> <p>Advanced Leadership in Nursing</p> <p>Performance Evaluation in Nursing</p> <p>Economics and Nursing</p> <p>Financial Management for Nursing Services</p> <p>Quantitative Analysis for Nursing Policy</p> <p>Seminar in Nursing Politics</p> <p>Seminar in global nursing</p> <p>Patient Safety and Quality Management in Health Care System</p> <p>Studies in Nursing Workforce Policy</p>
<b>Nursing Informatics</b>	<p>Measurement of Nursing Concept</p> <p>Nursing Information System Analysis and Design</p> <p>Nursing Information System Implementation and Evaluation</p> <p>Big Data Analytics for Healthcare</p> <p>Scope &amp; Standards of Practice for Nursing Informatics</p> <p>Consumer Health Informatics</p> <p>E-health and Nursing Knowledge Management</p> <p>Nursing Information System Database Design and Development</p>
<b>Community Health Nursing</b>	<p>Seminar in Advanced Community Health Nursing</p> <p>Health Promotion in Nursing</p> <p>Community Health Nursing Research</p> <p>Emergency Care System in Community</p> <p>Community Health Nursing Service Evaluation</p> <p>Long Term Care Policy and Nursing</p> <p>Case Management in the Community</p>



Adult Health Nursing Major



- 01. **Yi, MyungSun** Professor / DNS in State University of New York at Buffalo, donam@snu.ac.kr
- 02. **Choi, Smi** Dean and Professor / Ph.D. in University of Virginia, smi@snu.ac.kr
- 03. **Tak, Sunghee H** Professor / Ph.D. in University of Texas at Austin, shtak@snu.ac.kr
- 04. **Park, Yeon-Hwan** Professor / Ph.D. in Seoul National University, hanipyh@snu.ac.kr
- 05. **Suh, Eunyoung** Professor / Ph.D. in University of Pennsylvania, esuh@snu.ac.kr

- 06. **Koh, Chin-Kang** Associate Professor / Ph.D. in University of Washington, ckoh@snu.ac.kr
- 07. **Kang, Seung-Wan** Assistant Professor / Ph.D. in KyungHee University, drdemian@snu.ac.kr
- 08. **Kang, JaHyun** Assistant Professor / Ph.D. in University of North Carolina at Chapel Hill, jahyunkang@snu.ac.kr
- 09. **Chang, Sun Ju** Assistant Professor / Ph.D. in Seoul National University, changsj@snu.ac.kr

Maternal–Child and Psychiatric Nursing Major



Women’s Health & Maternity Nursing

- 01. **Chung, ChaeWeon** Associate Dean and Professor / Ph.D. in Case Western Reserve University, chungcw@snu.ac.kr
- 02. **Kim, Hae Won** Professor / Ph.D. in Seoul National University, haewon@snu.ac.kr

Child Health Nursing

- 03. **Bang, Kyung Sook** Professor / Ph.D. in Seoul National University, ksbang@snu.ac.kr
- 04. **Chae, Sun–Mi** Associate Professor / Ph.D. in Yonsei University, schae@snu.ac.kr



Psychiatric & Mental Health Nursing

- 05. **Kim, Sungjae** Professor / Ph.D. in Seoul National University, sungjae@snu.ac.kr
- 06. **Choi, Heeseung** Associate Professor / Ph.D. in University of Texas at Houston, hchoi20@snu.ac.kr
- 07. **Hwang, Boyoung** Associate Professor / Ph.D. in University of California, San Francisco, bhwang@snu.ac.kr

Community Health Nursing and Nursing Care System Major



Community Health Nursing

- 01. **Lee, In Sook** Professor / Ph.D. in Seoul National University, lisook@snu.ac.kr
- 02. **Yoon, Ju Young** Assistant Professor / Ph.D. in University of Wisconsin–Madison, yoon26@snu.ac.kr

Nursing Informatics

- 03. **Park, Hyeoun–Ae** Professor / Ph.D. in University of Minnesota, hapark@snu.ac.kr
- 04. **Kim, Jeongeun** Professor / Ph.D. in Seoul National University, kim0424@snu.ac.kr

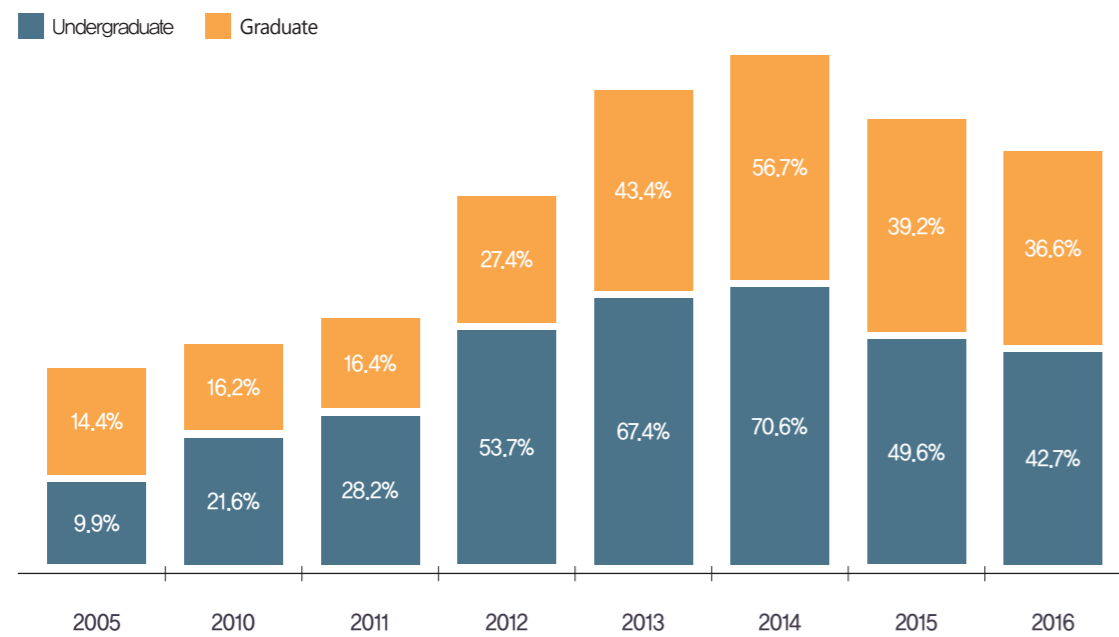


Nursing Management

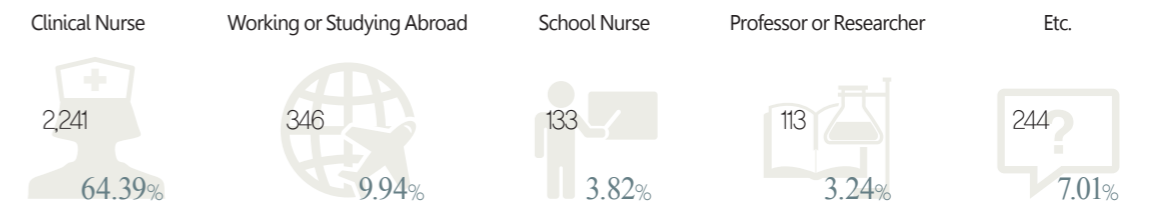
- 05. **Kim, Jinhyun** Professor / Ph.D. in Seoul National University, jinhyun@snu.ac.kr
- 06. **Cho, Sung–Hyun** Professor / Ph.D. in University of Michigan, sunghcho@snu.ac.kr
- 07. **Lee, Nam–Ju** Associate Professor / DNSc in Columbia University, njlee@snu.ac.kr

**Scholarship** SNU Advancement Funds Scholarship, SNU College of Nursing Alumni Scholarship, External Scholarship, and etc.

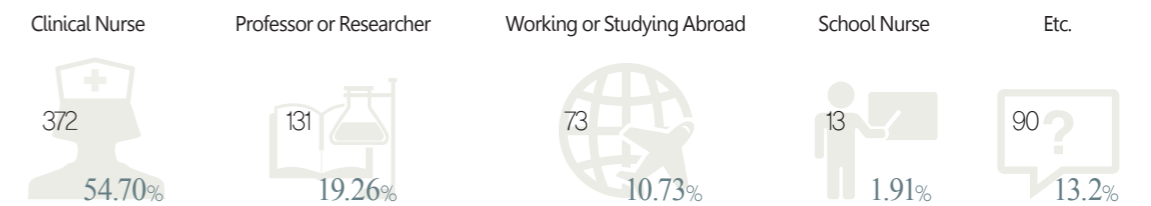
**Percentage of Students Receiving Scholarships**



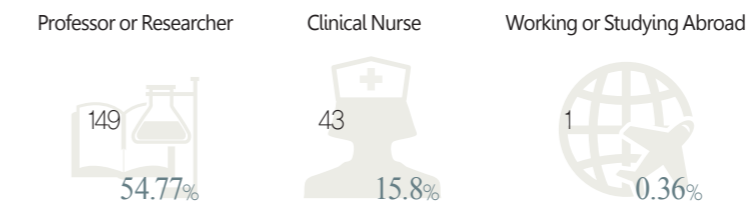
**Undergraduate (1963~2016)** Total number of graduates : 3,480



**Masters Program (1966~2016)** Total number of graduates : 680



**Doctoral Program (1989~2016)** Total number of graduates : 272



## Communicating and developing together with society

In order to be a global talents qualified for rapidly changing health care sector, students must be able to harmonize with the world. Students of SNU College of Nursing are learning how to communicate and grow with the world around them by doing a variety of activities to become nursing leaders such as student clubs, career searching activities and academic research activities.

### Student Clubs

DASONI(Volunteer Club), Exciting(Sports Club), Sori(Band Club), Funk Mission(Dance Club), Intelligent Design Society, Umteum(Researching Association of Medical Problem & Feminism), Songchon(Student Association of Health Care Service), CaSA(Yongon Campus Catholic Students' Association), Art Club, SNUMN(Chorus of the School of Nursing and Medicine), Moccabery(Theatrical Club), IVF(Inter-Varsity Christian Fellowship), JOY(Christian Students' Club), SNU Student Hospice, SNUGHF(Association of Global Health Forum), P.L.A.Y.(Piano Club)

### SNU-Nursing Career Searching Activities

SNU College of Nursing provides nursing students with various activities to explore different nursing careers. SNU-Nursing Mentoring Program (SNU-NMP) was launched in 2009 in order to help our nursing students to establish their identity as a nursing professional and to grow to be a competent nursing leader in the future. Since 2013, SNU-NMP has changed to Career Development Camp. The Camp invites nursing alumni with various nursing professions to share their career experience with our nursing students. In addition, SNU College of Nursing provides senior nursing students with Employment Capacity Development Program every summer with a collaboration with Department of Nursing, Seoul National University Hospital.

### Academic Research Activities

Juniors and seniors of the College conduct a research in a group for one year throughout the course of nursing research and publish the outcomes into a nursing student thesis book after completing their research. Since 2013, Nursing Student Research Presentation Day has been held. The selected outstanding research have opportunities to be published in the journal, Perspective in Nursing Science and to be presented in an academic conference held by The Research Institute of Nursing Science, Seoul National University.

## A Stepping Stone for Global Nursing Leaders

Seoul National University, College of Nursing has signed MOUs with universities abroad since 1999, and has established ties with 17 universities for successful exchange programs as of 2017. Various international exchange programs serve as opportunities for students to learn nursing science which has developed based on different cultural backgrounds of different countries and to grow global nursing leaders.

Seoul National University, College of Nursing is working with the Office of International Affairs, Seoul National University to operate Summer Programs. They are aiming to give students chances to build capability to respond to globalization by taking regular classes of training courses. Further, students also can improve language skills and having global experience through these programs. Students will learn nursing science developed based on different cultural backgrounds of different countries and improve their capabilities as health care professionals.



### SHINE Center

SHINE(Simulation-based, Humanity-Integrated Nursing Education) Center provides the similar environment to actual hospitals for students to simulate based on scenario. Opened in 2012, it accommodates 6 rooms in total; patient rooms, pediatric patient room, delivery room, preparation room, operating room and intensive care unit. It also has 5 high fidelity patient simulators for adults, child, mothers and babies. Nursing students in 2nd, 3rd and 4th year use them for simulation training which is possible to be simultaneously recorded and debriefed.

### Skills Lab

Skills Lab is equipped with ampules, vials, IV lines and simulators to train basic nursing skills and medication administration skills such as simple catheterization, foley catheterization, enema, tracheostomy care, IV insertion and intramuscular injection. This lab is also equipped with Inbody to analyze body composition. This lab is opened to undergraduate students for training basic nursing skills.

### SNU Hamchun Residence Hall

The College of Nursing operates a dormitory for undergraduate students, Hamchun Residence Hall for the juniors and seniors going through clinical practice. It Hall first opened in 1961 with assistance from the University of Minnesota. New Hamchun Residence Hall Building was built in 2005. It has a computer lab, a study room, a physical training center, seminar rooms, and a laundry. It is a eight-story building which can accommodate 144 people.

### Fundamental Nursing Lab

The Fundamental Nursing Lab is equipped with high-value equipment such as beds, wheelchairs, simulation dolls, CPR dummies, and IV pumping devices, as well as basic practice equipment such as disinfected forceps, sterilization kits, and bandages, that allow for bedbound nursing simulation and student practicums utilizing up-to-date medical equipment.

### Community Health Nursing Lab

The SNU College of Nursing has a unique lab for Community Health Nursing with all the equipment needed for the creative work of the students. Kitchen, Toilet, Bedroom, and other utilities similar to the living quarters of community dwelling older adults are equipped so that students can practice better in a realistic setting.

### Nursing Management Lab

The Nursing Management Lab serves by providing practice for diverse nursing roles. The room has a treatment room and nursing station. Students can practice communication, staffing and organization in environments similar to current clinical settings.

### Bionursing Lab

The Bionursing Lab has PCR Machines, Gel image analyzers, blood bank refrigerators, and various human anatomical models that allow students to have a hands-on approach to lab work.

### OSCE Room

The OSCE(Objective Structured Clinical Examination) center is used for clinical simulation training with standardized patients and accommodates 1 control room and 4 training rooms equipped with vibrating beds and examination devices. OSCE control room monitors simulation training happening in OSCE center in real-time or records it to replay later.



**Objectives**

In order to develop theories and technologies of nursing science for improving health of human beings, carry out research to come up with effective policies for health care of the public, build research capability of researchers and promote international academic exchange, we are aiming to

- Conduct research for development of basic nursing science
- Undertake research on effects of clinical application of state of the art medical technology to people cared for
- Develop and test the effects of nursing interventions for the demands of people cared for
- Carry out research to test the effect and efficiency of public health management programs
- Perform research to advance nursing education curriculum and system
- Do activities to foster researchers and build research capability
- Host international nursing conferences and pursue international research collaboration

**Major Events**

- Academic seminars
- Domestic or international conferences
- Multidisciplinary symposiums
- Research capacity strengthening workshops
- Invitational lectures by internationally-eminent scholars



**Purpose of Foundation**

Museum of Nursing Science has been established in 2007 to celebrate 100th anniversary of nursing education of SNU College of Nursing. It is designed to review 100 year-history of nursing education by collecting, conserving, investigating, researching and interpreting significant data related to nursing education and profession. It also serves to enhance prospects to nurture health care & nursing leaders and health care science experts for healthy life of human beings. Further, it is opened to the public to provide various exhibition and education for making a contribution to social development.

**Visiting Guide**

Open : Mon.~Fri. 13:00~17:00  
 Closed : Sat.~Sun., National Holidays, and School Foundation Day(October 15th)  
 Admission is free





## Eligibility Requirements

### B.S.N. Program

Korean and international students who had elementary, junior high, and high school education in countries other than Korea.

### M.S.N. Program/ M.S.N.-Ph.D. Program

International students whose both parents have not acquired the citizenship of Korea, and received their elementary, junior high, and high school education in countries other than Korea, and their undergraduate education either inside or outside Korea with the Bachelor's degree. Korean and international students who have received their entire elementary, junior high, high school, and undergraduate education outside Korea with a Bachelor's degree.

### Ph.D. Program

International students whose both parents have not acquired the citizenship of Korea who have received their entire elementary, junior high, and high school education outside Korea, and have finished undergraduate and graduate school either inside or outside Korea, and hold a Master's degree. Korean and international students who have received their entire elementary, junior high, and high school education outside Korea with a Master's degree.







SEOUL NATIONAL UNIVERSITY  
**COLLEGE OF NURSING**

103 Daehak-ro, Jongno-gu, Seoul, 03080, Korea  
Tel : 82-2-740-8802 <http://nursing.snu.ac.kr>